

CORNER RECORD

COUNTY OF Alameda T. _____ R. _____ MERIDIAN CALIFORNIA

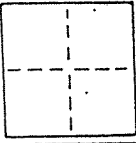
CORNER TYPE: GOVT. CORNER MEANDER RANCHO CONTROL OTHER

CORNER IDENTIFICATION — DATE OF VISIT June 19-89

Monument per 5 R.M. 89

Near Nos. 3, 4, 5, & 6 Hilarita Circle
(center of cul-de-sac), City of Belvedere

CORNER — LEFT AS FOUND FOUND AND TAGGED REESTABLISHED OBLITERATED CORNER REBUILT



PHYSICAL DESCRIPTION OF CORNER FOUND; EVIDENCE AND METHOD USED TO IDENTIFY OR REESTABLISH

Found $\frac{1}{2}$ " rebar
Original position perpetuated, distances not verified
Offset during repaving

PHYSICAL DESCRIPTION OF MONUMENTS, REBUILT OR PERPETUATED

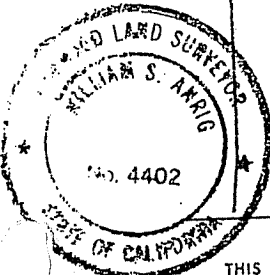
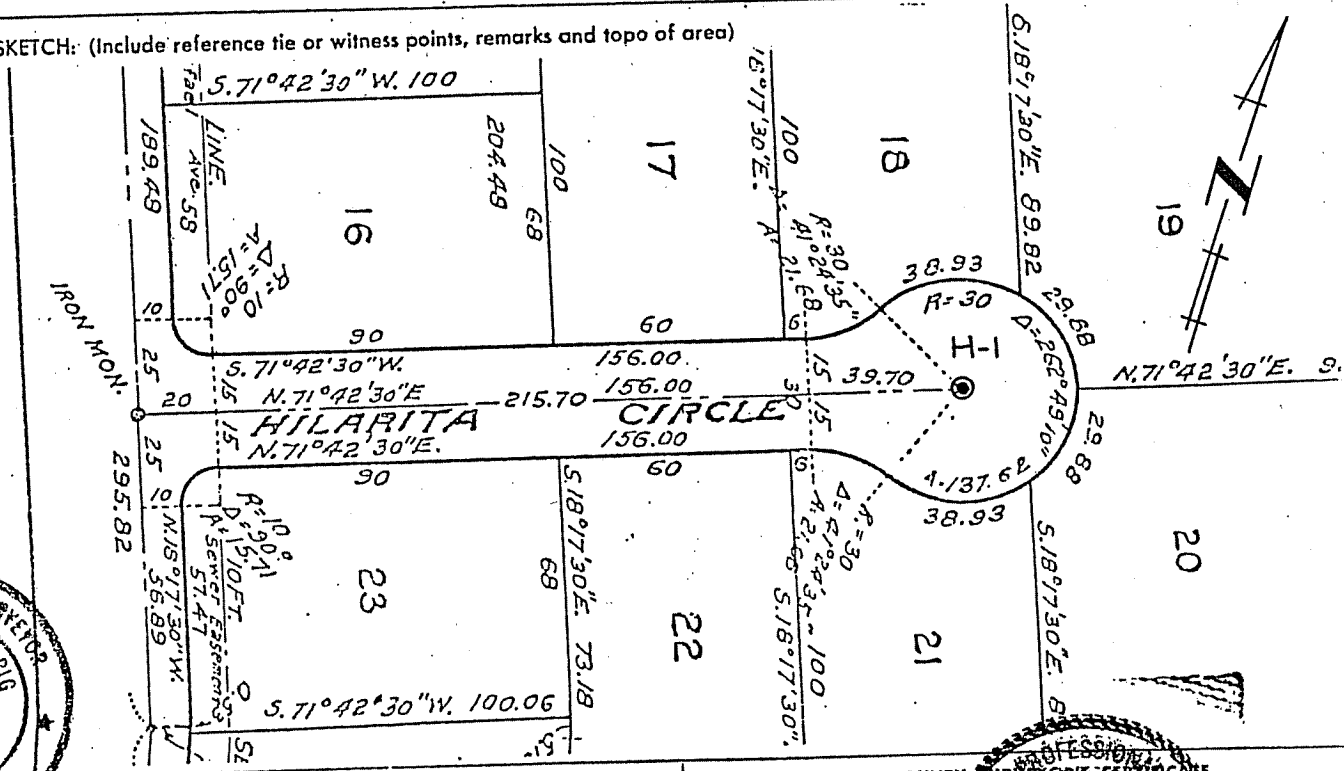
Standard cast iron street monument

CALIFORNIA COORDINATE SYSTEM ORDER: FIRST SECOND THIRD

STATIONS USED: NGS (USC & GS) STATE COUNTY OTHER STATION _____ EASTINGS (X) _____

ZONE _____ ELEVATION _____ NORTHINGS (Y) _____

SKETCH: (Include reference tie or witness points, remarks and topo of area)



SURVEYOR'S CERTIFICATE
THIS CORNER RECORD WAS PREPARED BY ME OR UNDER MY DIRECTION IN CONFORMANCE WITH THE LAND SURVEYORS ACT ON NOVEMBER 1 1990

SIGNED: William S. Anrig
L.S. or R.C.E. No.: L.S. 4402 Exp 9-30-93

COUNTY SURVEYOR'S CERTIFICATE
THE CORNER RECORD WAS PREPARED BY ME OR UNDER MY DIRECTION AND EXAMINED AND APPROVED BY: _____ TITLE: _____

DOCUMENT No. _____

STATEMENT ON BACK OF SHEET YES NO

